



MATERIALS

Cast aluminum bodies: Aluminum Alloy.

Forged steel parts: Steel Alloy.

Steel plate parts: Steel plate.

Extruded profiles: Aluminum Alloy.

PROTECTION AGAINST CORROSION

Steel parts: Hot dip galvanizing according to CSA-G164/ASTM A153.

Service pulleys for underground rollers: electrolytic zinc coating as per ASTM B633 standard.

STANDARDS

All parts are manufactured according to IEC 61284 standard.

Fasteners: galvanized steel as per ASTM A325 and ASTM A563 standards.

Forged material: EN-10083 equivalent to ASTM A576.

Steel plate material: EN-10025 equivalent to ASTM A36 or ASTM A572.

Cast Aluminum Alloy materials: EN-1706 equivalent to ANSI A413.0.

Aluminum Alloy extruded materials: EN-755 equivalent to ASTM B221.

Forged materials: designed according to EN-10243 standard.

Electrolytic zinc coating: as per ASTM B633 standard.

SIMPLE STRINGING BLOCKS

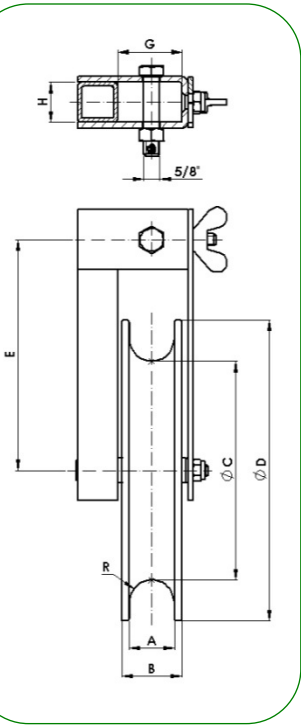
BLOCKS

Material: Sheave: Aluminum according to EN-1706 equivalent to ANSI A413.0.
Frame : Steel plate according to EN-10025 equivalent to ASTM A36 or ASTM A572.
Steel Parts finish: Hot dip galvanizing CSA-G164 / ASTM A153.

Bolts: ASTM A325.
Nuts: ASTM A563.

Reference	Figure	Dimensions (inch)								Coating of the groove	Ultimate Strength (lb)	Weight (lb)
		A	B	R	C	D	E	G	H			
CSP-140/AM	Fig.1	1.18	1.65	0.51	3.54	5.51	5.51	1.83	1.57	-	7,000	7.30
CSP-140-RT/AM	Fig.2	2.46	3.37	1.10	1.89	5.51	6.69	3.52	1.57	-	7,000	9.83
CSP-140-RT/N/AM	Fig.2	2.46	3.37	0.83	2.44	5.51	6.69	3.52	1.57	NEOPRENE	7,000	10.05
CSP-252/AM	Fig.3	2.20	2.76	0.79	6.30	9.92	9.06	2.92	1.57	-	6,000	13.89
CSP-252/N/AM	Fig.3	2.20	2.76	0.51	6.85	9.92	9.06	2.92	1.57	NEOPRENE	6,000	14.86
CSP-300/AM	Fig.3	1.81	2.36	0.87	8.58	11.81	9.06	2.54	1.57	-	11,000	13.76
CSP-300/N/AM	Fig.3	1.81	2.36	0.59	9.13	11.81	9.06	2.54	1.57	NEOPRENE	11,000	14.88
CSP-360/AM	Fig.3	2.76	3.35	1.14	10.16	14.17	11.42	3.51	1.57	-	11,000	23.24
CSP-360/N/AM	Fig.3	2.76	3.35	0.87	10.71	14.17	11.42	3.51	1.57	NEOPRENE	11,000	25.29

NOTE: Different types of couplings can be supplied upon request (see accessories for stringing blocks).



FRAMES

Material: Frame: Steel plate EN-10025 equivalent to ASTM A36 or ASTM A572.
Bolts: ASTM A325.
Nuts: ASTM A563.
Steel Parts finish: Hot dip galvanizing CSA-G164 / ASTM A153.

Reference	Dimensions (inch)			Weight (lb)
	A	B	D	
SP-140/AM	2.07	5.51	3/4	5.27
SP-140-RT/AM	3.76	6.69	3/4	6.24
SP-252/AM	3.16	9.06	3/4	6.75
SP-300/AM	2.78	9.06	3/4	6.57
SP-360/AM	3.75	11.42	3/4	7.80

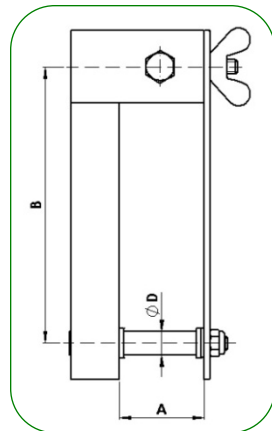


Fig.1



Fig.2

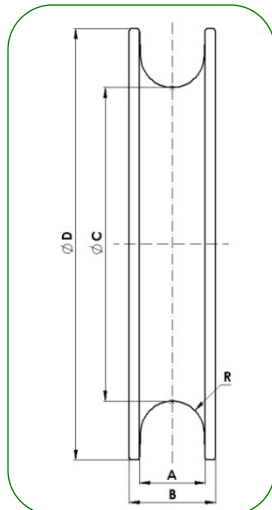


Fig.3

SHEAVES

Material: Sheave: Aluminum EN-1706 equivalent to ANSI A413.0.
Coating: Neoprene / Nylon

Reference	Figure	Dimensions (inch)					Coating of the groove	Weight (lb)
		A	B	R	C	D		
P-140/AM	Fig.1	1.18	1.65	0.51	3.54	5.51	-	2.20
P-140-RT/AM	Fig.2	2.46	3.37	1.10	1.89	5.51	-	3.40
P-140-RT/N/AM	Fig.2	2.46	3.37	0.83	2.44	5.51	NEOPRENE	3.81
P-252/AM	Fig.3	2.20	2.76	0.79	6.30	9.92	-	7.14
P-252/N/AM	Fig.3	2.20	2.76	0.51	6.85	9.92	NEOPRENE	8.11
P-300/AM	Fig.3	1.81	2.36	0.87	8.58	11.81	-	7.19
P-300/N/AM	Fig.3	1.81	2.36	0.59	9.13	11.81	NEOPRENE	8.29
P-360/AM	Fig.3	2.76	3.35	1.14	10.16	14.17	-	15.43
P-360/N/AM	Fig.3	2.76	3.35	0.87	10.71	14.17	NEOPRENE	17.15



SIMPLE STRINGING BLOCKS

BLOCKS

Material: Sheave: Aluminum according to EN-1706 equivalent to ANSI A413.0.
Frame: Steel plate according to EN-10025 equivalent to ASTM A36 or ASTM A572.
Steel Parts finish: Hot dip galvanizing CSA-G164 / ASTM A153.

Bolts: ASTM A325.
Nuts: ASTM A563.

Reference	Figure	Dimensions (inch)							Coating of the groove	Ultimate Strength (lb)	Weight (lb)
		A	B	R	C	D	E	F			
CSP-480/AM	Fig.1	2.17	2.64	1.08	15.28	18.90	21.85	1.57	-	22,000	32.85
CSP-480/N/AM	Fig.1	2.17	2.64	0.81	15.83	18.90	21.85	1.57	NEOPRENE	22,000	35.71
CSP-650/C/AM	Fig.2	3.82	4.53	1.85	24.61	30.51	27.66	1.57	-	27,000	65.72
CSP-650/N/AM	Fig.2	3.82	4.53	1.89	25.39	30.51	27.66	1.57	NEOPRENE	27,000	69.95
CSP-650/NY/AM	Fig.2	3.82	4.53	1.77	25.20	30.51	27.66	1.57	NYLON	27,000	69.16
CSP-900/C/AM	Fig.3	3.86	4.65	1.85	29.53	35.43	30.12	1.57	-	27,000	93.15
CSP-900/N/AM	Fig.3	3.86	4.65	1.83	30.31	35.43	30.12	1.57	NEOPRENE	27,000	98.28
CSP-900/NY/AM	Fig.3	3.86	4.65	1.52	30.16	35.43	30.12	1.57	NYLON	27,000	98.48

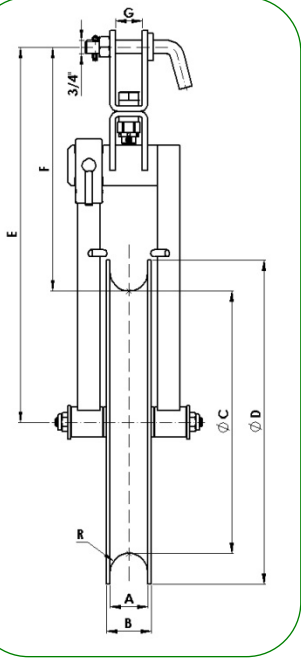


Fig.1



Fig.2

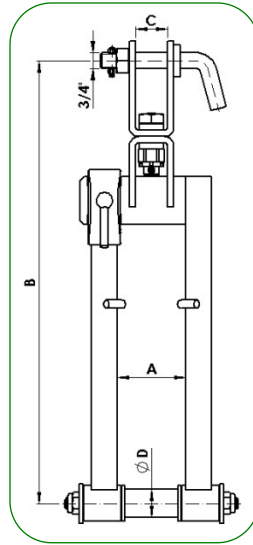


Fig.3

FRAMES

Material: Frame: Steel plate EN-10025 equivalent to ASTM A36 or ASTM A572.
Bolts: ASTM A325.
Nuts: ASTM A563.
Steel Parts finish: Hot dip galvanizing CSA-G164 / ASTM A153.

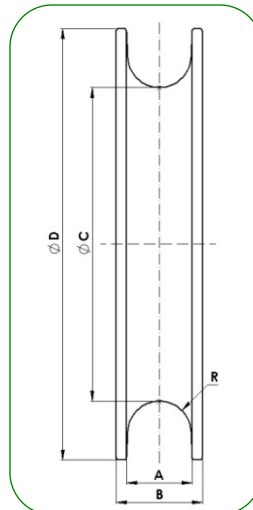
Reference	Dimensions (inch)				Weight (lb)
	A	B	C	D	
SSP-480/AM	3.35	21.85	1.57	1 3/8	19.22
SSP-650/AM	5.35	27.66	1.57	1 3/8	23.15
SSP-900/AM	5.35	30.12	1.57	1 3/8	24.03



SHEAVES

Material: Sheave: Aluminum EN-1706 equivalent to ANSI A413.0.
Coating: Neoprene / Nylon

Reference	Figure	Dimensions (inch)					Coating of the groove	Weight (lb)
		A	B	R	C	D		
P-480/AM	Fig.1	2.17	2.64	1.08	15.28	18.90	-	13.62
P-480/N/AM	Fig.1	2.17	2.64	0.81	15.83	18.90	NEOPRENE	16.49
PC-650/RS/AM	Fig.2	3.82	4.53	1.85	24.61	30.51	-	42.62
P-650/N/AM	Fig.2	3.82	4.53	1.89	25.39	30.51	NEOPRENE	46.85
P-650/NY/AM	Fig.2	3.82	4.53	1.77	25.20	30.51	NYLON	46.08
PC-900/RS/AM	Fig.3	3.86	4.65	1.85	29.53	35.43	-	69.11
P-900/N/AM	Fig.3	3.86	4.65	1.83	30.31	35.43	NEOPRENE	74.23
P-900/NY/AM	Fig.3	3.86	4.65	1.52	30.16	35.43	NYLON	74.45



TRIPLE STRINGING BLOCKS

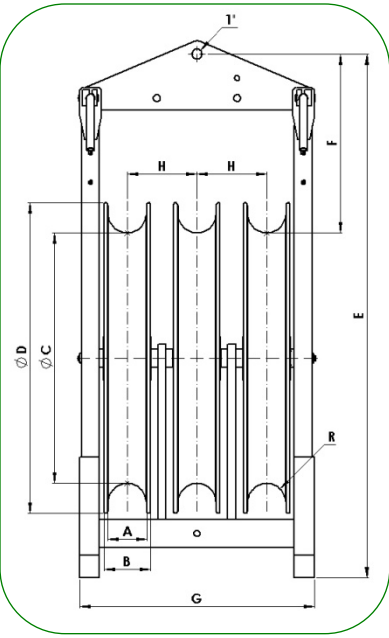
BLOCKS

Material: Sheave: Aluminum according to EN-1706 equivalent to ANSI A413.0.
Frame: Steel plate according to EN-10025 equivalent to ASTM A36 or ASTM A572.
Steel Parts finish: Hot dip galvanizing CSA-G164 / ASTM A153.

Bolts: ASTM A325.
Nuts: ASTM A563.

Reference	Figure	Dimensions (inch)								Coating of the groove	Ultimate Strength (lb)	Weight (lb)	
		A	B	R	C	D	E	F	G				H
CTP-480/AM	Fig.1	2.17	2.64	1.08	15.28	18.90	37.44	14.13	14.21	3.43	-	27,000	118.10
CTP-480/N/AM	Fig.1	2.17	2.64	0.81	15.83	18.90	37.44	13.86	14.21	3.43	NEOPRENE x 3	27,000	125.09
CTP-650/NY/AM	Fig.2	3.82	4.53	1.77	25.20	30.51	51.42	17.26	23.07	6.85	NYLON x 3	40,000	274.81
CTP-650/N-NY/AM	Fig.2	3.82	4.53	1.89	25.39	30.51	51.42	16.77	23.07	6.85	NEOPRENE x 2 CENTRAL NYLON x 1	40,000	276.39
CTP-900/N/AM	Fig.3	3.86	4.65	1.83	30.31	35.43	56.34	17.17	23.07	6.85	NEOPRENE x 2 CENTRAL NYLON x 1	40,000	371.15

NOTES: Different types of couplings can be supplied upon request (see accessories for stringing blocks).
 Different combinations of coatings upon request.
 Reinforced stringing blocks for oblique angle layouts, end "R", can be supplied upon request (CTPR-xx).



FRAMES

Material: Frame: Steel plate EN-10025 equivalent to ASTM A36 or ASTM A572.
Bolts: ASTM A325.
Nuts: ASTM A563.
Steel Parts finish: Hot dip galvanizing CSA-G164 / ASTM A153.

Reference	Dimensions (inch)					Weight (lb)
	A	B	C	D	E	
SPT-480/AM	6.85	37.44	9.96	21.77	14.21	77,07
SPTR-480/AM	6.85	37.80	9.96	22.13	18.15	-
SPT-650/AM	13.70	51.42	15.85	29.86	23.07	138.27
SPTR-650/AM	13.70	51.77	15.85	30.22	27.01	-
SPT-900/AM	13.70	56.34	18.31	32.32	23.07	145.51
SPTR-900/AM	13.70	56.69	18.31	32.68	27.01	-

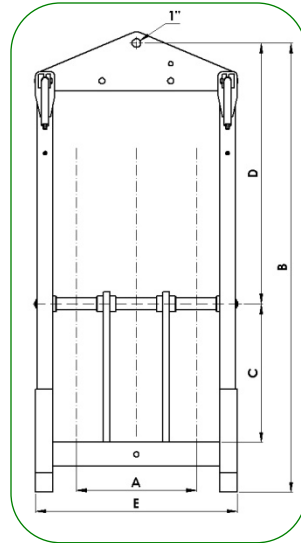


Fig.1



Fig.2

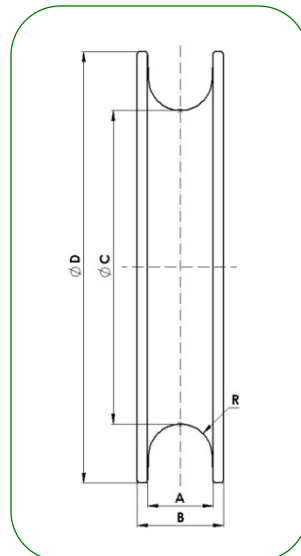


Fig.3

SHEAVES

Material: Sheave: Aluminum EN-1706 equivalent to ANSI A413.0.
Coating: Neoprene / Nylon

Reference	Figure	Dimensions (inch)					Coating of the groove	Weight (lb)
		A	B	R	C	D		
P-480/AM	Fig.1	2.17	2.64	1.08	15.28	18.90	-	13.62
P-480/N/AM	Fig.1	2.17	2.64	0.81	15.83	18.90	NEOPRENE	16.49
PC-650/RS/AM	Fig.2	3.82	4.53	1.85	24.61	30.51	-	42.62
P-650/N/AM	Fig.2	3.82	4.53	1.89	25.39	30.51	NEOPRENE	46.85
P-650/NY/AM	Fig.2	3.82	4.53	1.77	25.20	30.51	NYLON	46.08
PCC-650/RD/AM	Fig.2	3.82	4.53	1.85	24.61	30.51	-	40.83
PC-650/NY/AM	Fig.2	3.82	4.53	1.77	25.20	30.51	NYLON	44.25
PC-900/RS/AM	Fig.3	3.86	4.65	1.85	29.53	35.43	-	69.11
P-900/N/AM	Fig.3	3.86	4.65	1.83	30.31	35.43	NEOPRENE	74.23
P-900/NY/AM	Fig.3	3.86	4.65	1.52	30.16	35.43	NYLON	74.45
PC-900/C/AM	Fig.3	3.86	4.65	1.85	29.53	35.43	-	67.29
P-900/C/AM	Fig.3	3.86	4.65	1.85	29.53	35.43	-	65.52
P-900/C/NY/AM	Fig.3	3.86	4.65	1.52	30.16	35.43	NYLON	72.64

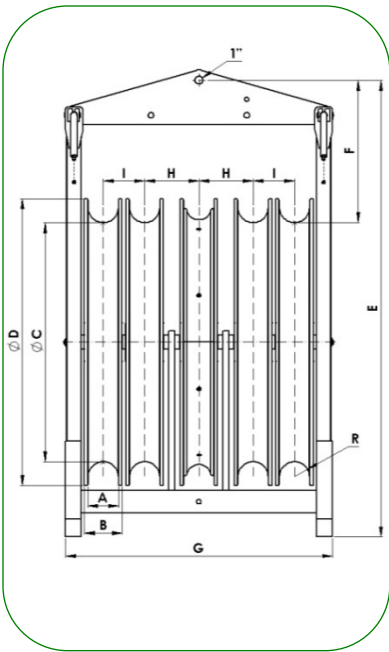


QUINTUPLE STRINGING BLOCKS

BLOCKS

Material: Sheave: Aluminum according to EN-1706 equivalent to ANSI A413.0.
Frame: Steel plate according to EN-10025 equivalent to ASTM A36 or ASTM A572.
Steel Parts finish: Hot dip galvanizing CSA-G164 / ASTM A153.

Bolts: ASTM A325.
Nuts: ASTM A563.



Reference	Figure	Dimensions (inch)										Coating of the groove	Ultimate Strength (lb)	Weight (lb)
		A	B	R	C	D	E	F	G	H	I			
CQP-650/C-NY/AM	Fig.1	3.82	4.53	1.85	24.61	30.51	51.42	17.56	32.99	6.69	5.12	CENTRAL NYLON x 1	40,000	-
CQP-650/N/AM	Fig.1	3.82	4.53	1.89	25.39	30.51	51.42	17.17	32.99	6.69	5.12	NEOPRENE x 4 CENTRAL NYLON x 1	40,000	-
CQP-650/NY/AM	Fig.1	3.82	4.53	1.77	25.20	30.51	51.42	17.26	32.99	6.69	5.12	NYLON x 5	40,000	-
CQP-900/C-NY/AM	Fig.2	3.86	4.65	1.85	29.53	35.43	56.34	17.56	32.99	6.69	5.12	CENTRAL NYLON x 1	40,000	515.44
CQP-900/N/AM	Fig.2	3.86	4.65	1.83	30.31	35.43	56.34	17.17	32.99	6.69	5.12	NEOPRENE x 4 CENTRAL NYLON x 1	40,000	536.10
CQP-900/NY/AM	Fig.2	3.86	4.65	1.52	30.16	35.43	56.34	17.24	32.99	6.69	5.12	NYLON x 5	40,000	536.91
CQPR-900/NY/AM	Fig.3	3.86	4.65	1.52	30.16	35.43	56.69	17.62	36.93	6.69	5.12	NYLON x 5	40,000	611.45

NOTES: Different types of couplings can be supplied upon request (see accessories for stringing blocks).
 Different combinations of coatings upon request.
 Reinforced stringing blocks for oblique angle layouts, end "R", can be supplied upon request (CQPR-xx).

FRAMES

Material: Frame: Steel plate EN-10025 equivalent to ASTM A36 or ASTM A572.
Bolts: ASTM A325.
Nuts: ASTM A563.

Steel Parts finish: Hot dip galvanizing CSA-G164 / ASTM A153.

Reference	Dimensions (inch)						Weight (lb)
	A	B	C	D	E	F	
SPQ-650/AM	13.39	23.62	51.42	15.85	29.86	32.99	159.13
SPQR-650/AM	13.39	23.62	51.77	15.85	30.22	36.93	-
SPQ-900/AM	13.39	23.62	56.34	18.31	32.32	32.99	166.45
SPQR-900/AM	13.39	23.62	56.69	18.31	32.68	36.93	241.30

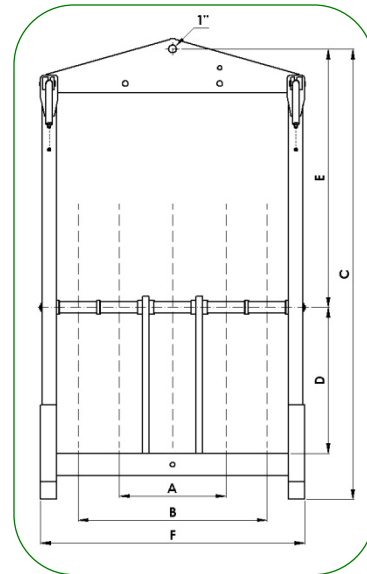


Fig.1



Fig.2

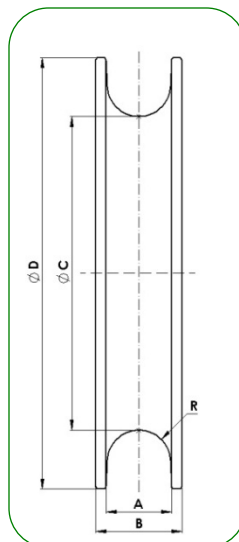


Fig.3

SHEAVES

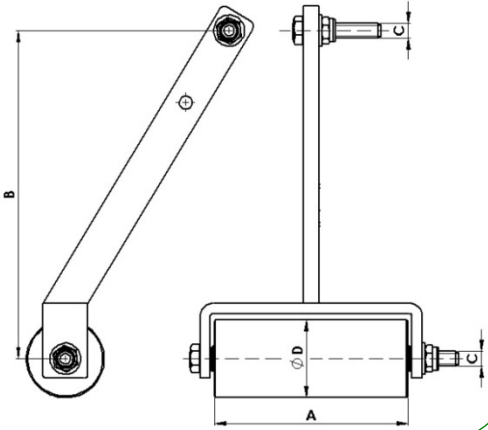
Material: Sheave: Aluminum EN-1706 equivalent to ANSI A413.0.
Coating: Neoprene / Nylon

Reference	Dimensions (inch)					Coating of the groove	Weight (lb)
	A	B	R	C	D		
PC-650/RS/AM	3.82	4.53	1.85	24.61	30.51	-	42.62
P-650/N/AM	3.82	4.53	1.89	25.39	30.51	NEOPRENE	46.85
P-650/NY/AM	3.82	4.53	1.77	25.20	30.51	NYLON	46.08
PCC-650/RD/AM	3.82	4.53	1.85	24.61	30.51	-	40.83
PC-650/NY/AM	3.82	4.53	1.77	25.20	30.51	NYLON	44.25
PC-900/RS/AM	3.86	4.65	1.85	29.53	35.43	-	69.11
P-900/N/AM	3.86	4.65	1.83	30.31	35.43	NEOPRENE	74.23
P-900/NY/AM	3.86	4.65	1.52	30.16	35.43	NYLON	74.45
PC-900/C/AM	3.86	4.65	1.85	29.53	35.43	-	67.29
P-900/C/AM	3.86	4.65	1.85	29.53	35.43	-	65.52
P-900/C/NY/AM	3.86	4.65	1.52	30.16	35.43	NYLON	72.64



GROUND CONNECTIONS

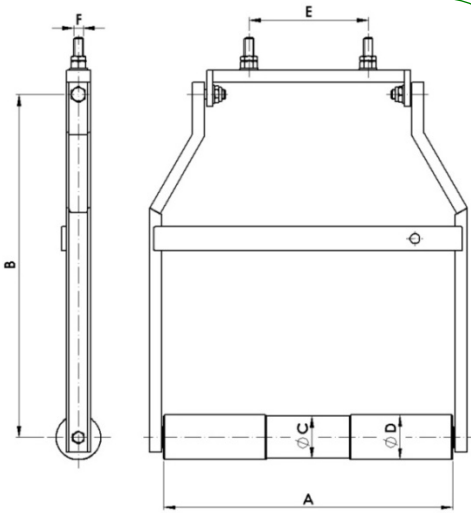
SIMPLE



Material: Underground roller: Aluminum EN-755 equivalent to ASTM B221. **Bolts:** ASTM A325.
Body: Steel plate EN-10025 equivalent to ASTM A36 or ASTM A572). **Nuts:** ASTM A563.
Steel Parts finish: Hot dip galvanizing CSA-G164 / ASTM A153.

Reference	Dimensions (inch)				Weight (lb)
	A	B	C	D	
PTS-480-EL/AM	3.74	10.00	1/2	2.36	-
PTS-650-EL/AM	5.91	10.00	1/2	2.36	-
PTS-900-EL/AM	5.91	10.00	1/2	2.36	6.00

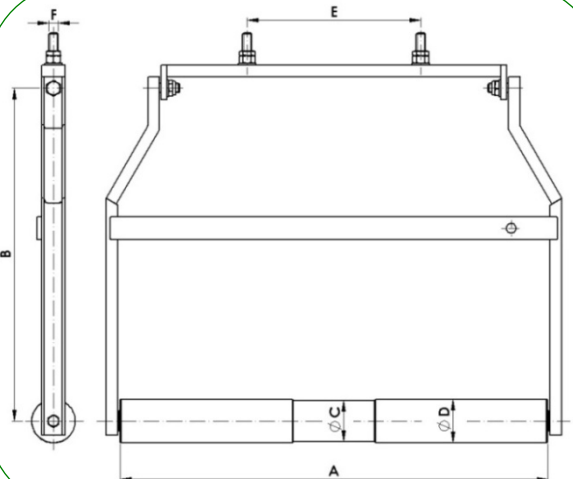
TRIPLE



Material: Underground roller: Aluminum EN-755 equivalent to ASTM B221. **Bolts:** ASTM A325.
Body: Steel plate EN-10025 equivalent to ASTM A36 or ASTM A572). **Nuts:** ASTM A563.
Steel Parts finish: Hot dip galvanizing CSA-G164 / ASTM A153.

Reference	Dimensions (inch)						Weight (lb)
	A	B	C	D	E	F	
PTT-480-EL/AM	10.28	22.64	2.80	2.95	7.87	5/8	-
PTT-650-EL/AM	19.13	22.64	2.80	2.95	7.87	5/8	-
PTT-900-EL/AM	19.13	22.64	2.80	2.95	7.87	5/8	28.66

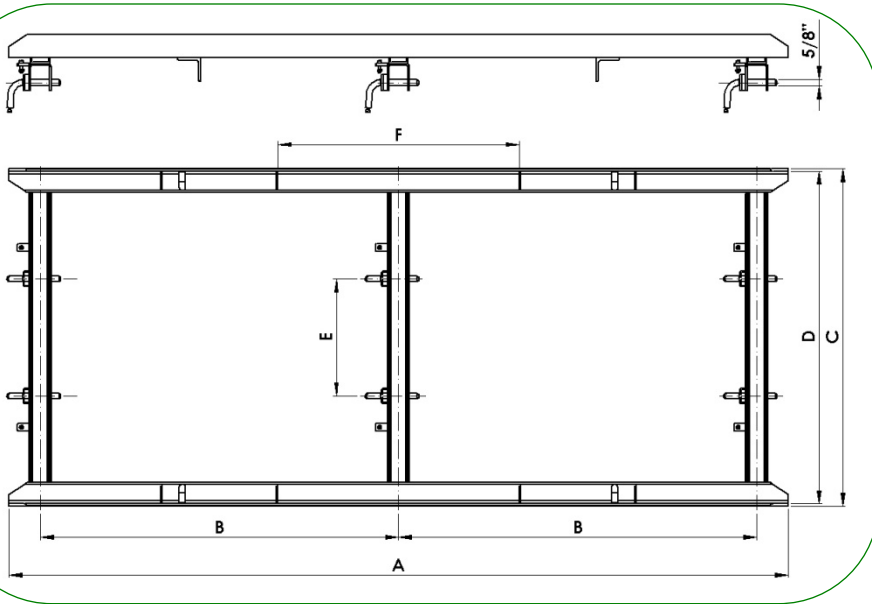
QUINTUPLE



Material: Underground roller: Aluminum EN-755 equivalent to ASTM B221. **Bolts:** ASTM A325.
Body: Steel plate EN-10025 equivalent to ASTM A36 or ASTM A572). **Nuts:** ASTM A563.
Steel Parts finish: Hot dip galvanizing CSA-G164 / ASTM A153.

Reference	Dimensions (inch)						Weight (lb)
	A	B	C	D	E	F	
PTQ-650-EL/AM	29.06	22.64	2.80	2.95	11.81	5/8	-
PTQ-900-EL/AM	29.06	22.64	2.80	2.95	11.81	5/8	37.59

TRANSPORTATION FRAMES



Material: Body: Steel plate according to EN-10025 equivalent to ASTM A36 or ASTM A572.

Bolts: ASTM A325.
Nuts: ASTM A563.

Steel Parts finish: Hot dip galvanizing CSA-G164 / ASTM A153.

Reference	Dimensions (inch)						Weight (lb)
	A	B	C	D	E	F	
ST-CQP-EL/AM	78.74	36.22	34.02	33.54	11.81	24.41	94.25
ST-CQPR-EL/AM	78.74	36.22	37.95	37.48	11.81	24.41	147.16

ACCESSORIES FOR STRINGING BLOCKS

LUBRICATOR



NEOPRENE COVER

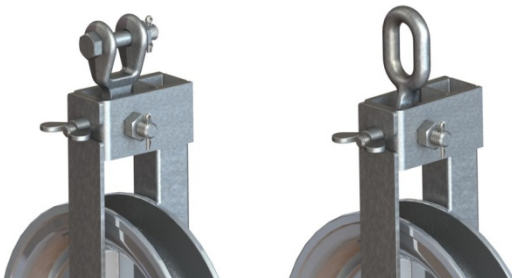


NYLON COVER



ADDITIONAL COUPLINGS

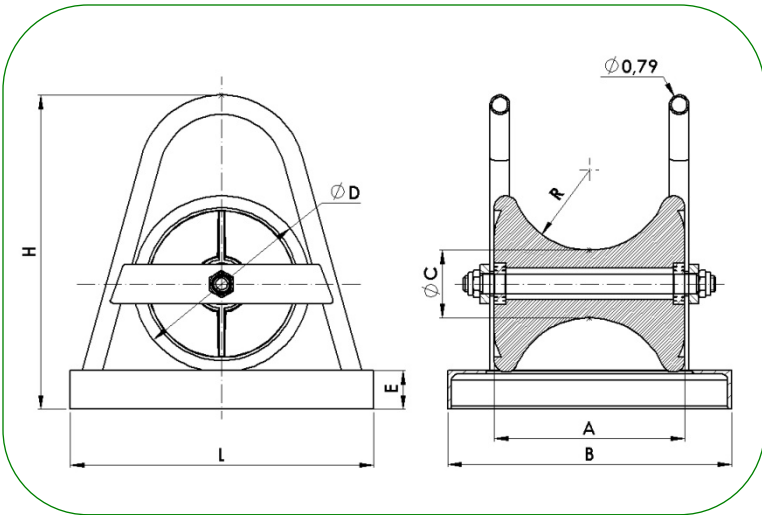
SINGLE



TRIPLE-QUINTUPLE

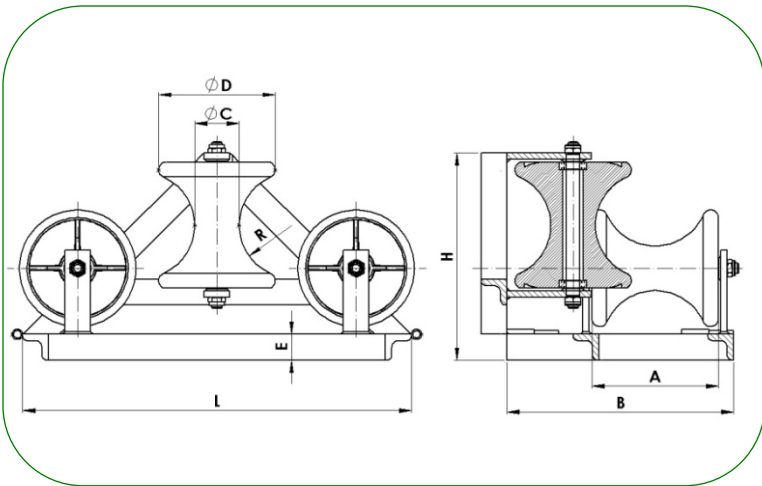


UNDERGROUND ROLLERS



Material: Underground roller: Aluminum EN-1706 equivalent to ANSI A413.0.
Frame : Steel plate EN-10025 equivalent to ASTM A36 or ASTM A572.
Bolt: ASTM A325.
Nut: ASTM A563.
Steel Parts finish: Electrolytic zinc coating ASTM B633

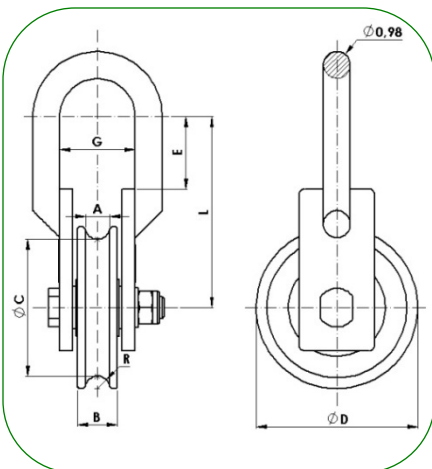
Reference	Dimensions Roller (inch)				Dimensions Support (inch)				Weight (lb)
	A	C	D	R	L	B	H	E	
CSEL-3/AM	7.68	2.72	7.09	3.15	12.20	11.42	12.60	1.57	21.85



Material: Underground roller: Aluminum EN-1706 equivalent to ANSI A413.0.
Frame : Steel plate EN-10025 equivalent to ASTM A36 or ASTM A572.
Bolt: ASTM A325.
Nut: ASTM A563.
Steel Parts finish: Electrolytic zinc coating ASTM B633

Reference	Dimensions Roller (inch)				Dimensions Support (inch)				Weight (lb)
	A	C	D	R	L	B	H	E	
CTEL-3/AM	7.68	2.72	7.09	3.15	23.62	13.78	12.60	1.57	21.80

SERVICE PULLEYS



Material: Frame: Steel EN-10025 equivalent to ASTM A36 or ASTM A572. **Bolt:** ASTM A325.
Sheave: Forged steel EN-10083 equivalent to ASTM A576. **Nut:** ASTM A563.
Steel Parts finish: Electrolytic zinc coating ASTM B633

Reference	Dimensions (inch)								Ultimate Strength (lb)	Weight (lb)
	A	B	R	C	D	L	E	G		
PTC-C-150/AM	0.89	1.46	0.45	5.00	5.91	7.01	2.68	2.76	80,000	21.80

